

## Contact Details

For USA please email [info@experia-usa.com](mailto:info@experia-usa.com)

Telephone: (800) 882-4045

**Please note:** email is our support team's preferred communication and this takes precedence over telephone calls.

## QUESTIONS & IDEAS?

If you have an idea on how to improve this product or want to see your product idea realized, please email: [info@experia-usa.com](mailto:info@experia-usa.com).

All ideas are presented to our OT, technical and finance department and if all procedures are passed we will contact you to discuss your idea further.

We can't promise to develop every product but if it's a great idea, we'll try!



Proudly manufactured in the U.S.A by

© Copyright 2020 Experia  
All rights reserved.  
Experia is a registered trademark.



**WARNING: CHOKING HAZARD**  
**Small Parts:** Not suitable for  
Children under 3 years.



# Sensory Texture Wheel 71000 Product Manual

Please follow all warnings on the product and within this manual. If upon receipt of this product, the user suspects that the product is defective, and/or requires service or repair due to malfunction or damage to the product, please contact the manufacturer immediately. Please be aware that improper installation and/or use or misuse of this product may result in injury, death, or adverse reactions to its user. Failure to comply with these precautions or with specific warnings elsewhere in this manual violates safety standards of design, manufacture, and intended uses of the product.

Experia USA, Inc.  
2880 McEver Road  
Bldg. 1 - D  
Buford, GA 30518  
(800) 882-4045  
[info@experia-usa.com](mailto:info@experia-usa.com)

experia  
multisensory for everyone

## Congratulations on the purchase of your Sensory Texture Wheel!

The Sensory Texture Wheel has been designed specifically for people with special needs and should, if used in accordance with these guidelines, offer years of fun!

The Sensory Texture Wheel is designed to explore textures and colors, and to create a heavy work task. With the included disks of matching textures, there are many different interactive activities to try!

It comes complete with one of the easiest-to-install mounting brackets in the market.

**Please ensure you read and follow these Instructions carefully before operating the unit. Please keep this manual for future reference.**

### Features

- Designed in the USA
- 8 unique textures
- Easy installation
- Rotating texture wheel
- Replaceable texture panels
- Durable
- Easy to use
- 1 Year Manufacturers Guarantee

### Pack contents

- 1 x Sensory Texture Wheel
- 1 x Mounting Bracket
- 3 x Heavy Duty Anchors
- 3 x Small washers
- 3 x Medium washers
- 1 x Snap Cap
- 8 x Matching texture disks
- 1 x Drawstring Bag

### Getting Started

**Note:** We have provided heavy duty drywall anchors. However, if you install directly into wood studs (see step #3), OR if you have a brick/block wall, you will need different installation hardware. Please consult a qualified contractor or handyman.

1. Unpack the texture wheel and make sure that there are no missing pieces.
2. Determine the location you wish to install the Sensory Texture Wheel. It is 46" in diameter, so make sure there is adequate room.

## Cleaning instructions

First, check with your facilities guidelines for guidance on the use of specific cleaning supplies.

**Fur panel:** Vacuum with a hand-held vacuum. Do NOT use a vacuum with a rotating brush. If it requires deeper cleaning, make a solution of laundry detergent and lukewarm water. Hand clean, rinse by hand, and let dry.

**Minke (bumpy fabric) panel:** Same as fur panel.

**Artificial turf:** Wipe with approved disinfectant solution.

**Ribbed rubber:** Wipe with approved disinfectant solution.

**Wavy Plastic:** Wipe with approved disinfectant solution.

**Sequin fabric:** *Carefully* wipe with approved disinfectant solution.

**Burlap fabric:** Gently wipe with approved disinfectant solution.

**Diamond plate:** Wipe with approved disinfectant solution.

## Games and Activities (Cont.)

**Find and Feel.** Place the small discs on a surface and allow the individuals to select one and then go find the matching surface on the wheel.

**Spin and Say.** Using one or both hands, spin the wheel and then stop it by placing a hand or finger on it. Which texture did you land on? What does it feel like?

**Left and Right.** Spin the wheel to the right. Now spin to the left. If appropriate, learn words such as clockwise and counterclockwise. Try using your left arm to spin right and your right arm to spin left.

**Blind Guess.** Close your eyes. Find a spot on the wheel to touch. Then with eyes closed, reach for the smaller discs and try to select the same texture.

**Color Corner.** Touch your favorite color. Describe it. What does it remind you of? Can you find words to describe each color?

**Touch and Do.** Give each texture an action. For example, artificial turf can be “jump”. You can place those words on the wheel or use verbal commands. Touch the texture and do the command.

### Replacement or additional texture panels

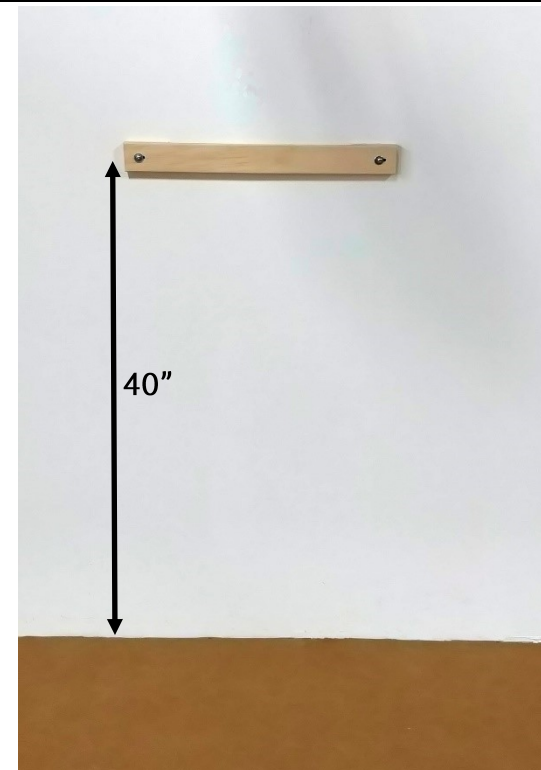
We designed the Sensory Texture Wheel to be upgradeable and customizable! If you have an idea for a new or different texture panel, please contact us! We would be happy to make this happen for you at a reasonable price. You can reach us at:

**Phone:** (800) 882-4045

**Email:** [info@experia-usa.com](mailto:info@experia-usa.com)

3. The mounting bracket is designed for two anchors spaced 16” apart. If you are installing onto a standard wood-framed wall, we would recommend that you locate two studs and install the bracket directly into the studs. Otherwise, mark the location for the two bottom anchors. We recommend that you locate the bracket 40” from the floor. At this height, the bottom of the Sensory Texture Wheel will be 25” from the floor. However, you can modify this height to suit your needs (see table, below). Once you’ve decided the appropriate height for your Sensory Texture Wheel, level the bracket and mark the wall through the slots in the bracket. Remove the bracket and set aside.

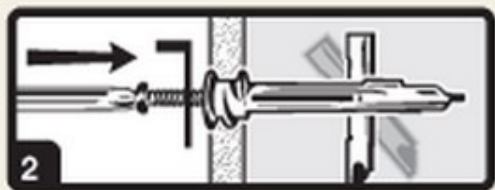
Bracket Height	Bottom of Wheel	Top of Wheel
33”	18”	64”
40”	25”	71”
45”	30”	76”



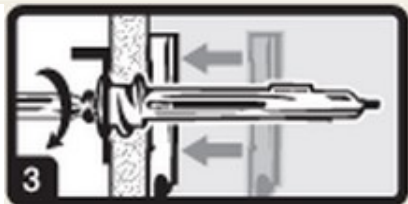
4. Using a #2 Phillips screwdriver and **WITHOUT** the anchor's screw installed, press the anchor tip slightly into drywall (1) and, while applying pressure, turn anchor until flush with drywall (2).



**Make sure the arrows on head of anchor point up and down. Do not over-tighten.** Repeat on each mark.



5. Now, insert the anchor's long screw, which will flip the back side of the anchor (2) vertically. You might need to tap it, then tighten it, to pull it against the drywall (3).



6. Remove the screw and set aside.
7. Hold the bracket up to the anchors, **WITH THE SLOT AGAINST THE WALL (see image, below)**. Put a small, then a medium, washer on the anchor's screw and tighten. Repeat for both anchors.



8. In a clean location, turn the Sensory Texture Wheel over. You will see there is a flat section on the bottom. This end will slide into the slot in the bracket. With a helper, lift the Sensory Texture Wheel up with the flat end facing the floor. Center the wheel over the bracket and lower it into the wall bracket. You can lean the wheel forward slightly to ensure it is sitting flat into the bracket.

**IMPORTANT:** Be sure the wheel is FULLY seated into the bracket!

9. Press the wheel flat against the wall, and mark the location for the top anchor.
10. Temporarily set the Sensory Texture Wheel aside and install the 3rd anchor according to the steps outlined previously.
11. Replace the Sensory Texture Wheel onto the wall bracket, and press flat against the wall. Place a small and medium washer onto the anchor's screw, and then the flat plastic washer from the snap-cap. This will hide the screw once installed.
12. Tighten the top anchor firmly, and press the top of the snap cap in place.
13. Enjoy your new Sensory Texture Wall.

## Games and Activities

Your wheel includes 8 small discs with textures that match to those on the wheel, providing a "tactile match game" or activity for recognizing textures and encouraging motor planning, stereognosis and sensory processing. (Continued on next page.)

