

Contact Details

For USA please email support@experia-usa.com

Telephone: (800) 882-4045

© 2020 All rights reserved.

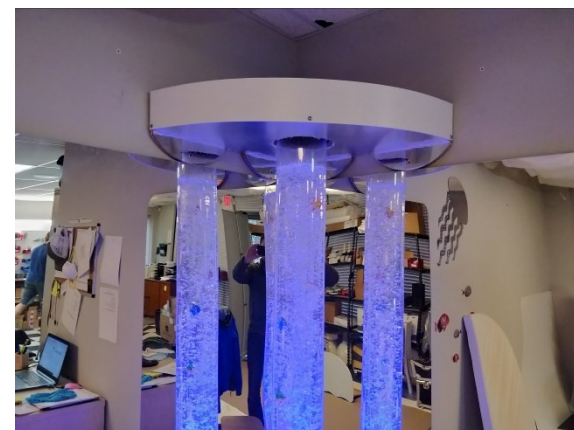
Experia is a registered trademark.

experia **USA**
multisensory for everyone

Proudly made in the USA by



Heavy Duty Corner Bubble Tube Bracket



Congratulations on the purchase of your Heavy Duty Bubble Tube Bracket!

Please follow all warnings on the product and within this manual. If upon receipt of this product the user suspects that the product is defective, and/or requires service or repair due to malfunction or damage to the product, please contact the manufacturer immediately. Please be aware that improper installation and/or use or misuse of this product may result in serious injury, to its user. This product is intended to be installed and/or use by a trained professional. Failure to comply with these precautions or with specific warnings elsewhere in this manual violates safety standards of design, manufacture, and intended uses of the product.

Please ensure you read and follow these Instructions carefully before operating the unit. Please keep this manual for future reference.



WARNING: CHOKING HAZARD

Small Parts: Not suitable for children under 3 years.



3+ years

Pack contents

- 1 x Heavy duty corner bracket
- 1 x Positioning ring with 4 clamps
(ships installed)
- 4 x Heavy duty drywall anchors
- 1 x White PVC trim strip
- 3 x Truss Head Screws (for attaching white PVC Strip)
- 7 x Snap-Caps (to hide screw heads)

Tools needed

- Thin marking instrument (pencil, pen, etc.)
- Screwdriver
- (Battery Drill with screwdriver bit recommended.)
- Ratchet with 7/16" socket
- or 7/16" -wrench

Installation Guide

It is optimal to have at least one helper to install this product.

Note: This bracket is designed to fit Experia USA bubble tubes in a corner (not on a flat wall), either by itself or inside an Experia USA bubble tube platform. Platforms and bubble tubes from other manufacturers may or may not be compatible. The center hole of this bracket is 9" from either wall.

1. Carefully unpack the heavy duty bracket and make sure you have all the listed components. Remove the positioning ring and clamps and set aside in a secure location. Remove the protective film from the mirrored surface.
2. Make sure your bubble tube platform is pressed against both walls—or as close as possible.

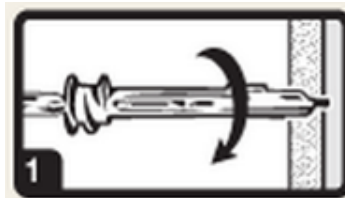
3. With the mounting tabs facing up, lift the bracket up and over the top of the bubble tube. Lower the bracket until at least 2" of the bubble tube is through the bracket.

4. At this height, hold the bracket tightly against the wall and mark through the four mounting tabs. This is where you will install the four 100 lb. anchors.

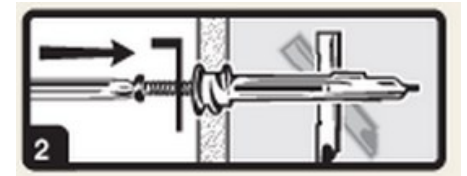
5. Install the four 100 lb. capacity anchors using #2 Phillips screwdriver. Press the anchor tip slightly into drywall and, while applying pressure, turn anchor until flush with drywall. **Make sure the arrows on head of anchor point up and down and Do not overtighten.** Repeat on each mark.

6. Put the four anchor screws through the bottom half of the Snap-Caps in advance of the next step.

Mounting Tabs



7. With your helper, hold the Corner Shower in place over the anchors, and push screw (with snap cap) through the mounting holes and into anchor to engage toggle bar (image 2, below right).
8. Tighten screw flush and **continue turning**. The screw will stop turning when toggle bar is tightly secured against the wall (image 3, below).



9. The bracket has an oversized hole for the bubble tube in order to accommodate small variations in the placement of the bubble tube from the walls. This is where the positioning ring comes in.
10. Put the positioning ring over the top of the bubble tube, machined side facing up, and slide it down to the top surface of the bracket.
11. Place two of the clamps onto the positioning ring on opposite sides, and reinstall the washer and bolts hand-tight. Repeat with the remaining two clamps.
12. Tighten the clamps down completely with your ratchet or wrench. The bubble tube should not budge at this point.
13. Hold the white PVC strip up against the edge of the Corner Shower, with mounting holes toward the floor. Using the three truss head screws, put them through the snap cap bottoms, and then fasten the PVC strip to the edge in 3 places.
14. Snap the Snap-Cap covers onto their bases to cover the exposed screw heads.

