



# Calming Jellyfish

030040

## Product Manual



**WARNING: CHOKING HAZARD**

Small Parts: Not suitable for children under 3 years.

Experia USA, Inc.  
2880 McEver Road  
Bldg. 1 - D  
Buford, GA 30518  
(800) 882-4045  
info@experia-usa.com

experia  
multisensory for everyone

## **Congratulations** on the purchase of your Calming LED Fiber Optic Jellyfish!

It has been designed specifically for people with special needs and should, if used in accordance with these guidelines, offer years of fun! The slowly changing colors help to create a calming, relaxing environment, perfect for de-escalation opportunities. Plus, the playful shape naturally draws children in, and provides a wonderful opportunity for an underwater theme.

It uses our proprietary Fiber Optic Lightsource, currently one of the brightest LED Lightsources currently available and produces multiple shades of colors in calming mode. The Jellyfish also includes our safe, 150 strand fiber optic sideglow harness. There is no electricity present in the fiber optic strands—just light—so it is safe to touch and hold.

**Please ensure you read and follow these Instructions carefully before installing or operating the unit. Please keep this manual for future reference.**

If upon receipt of this product, the user suspects that the product is defective, and/or requires service or repair due to malfunction or damage to the product, please contact the manufacturer immediately. Please be aware that improper installation and/or use or misuse of this product may result in injury, death, or adverse reactions to its user. Failure to comply with these precautions or with specific warnings elsewhere in this manual violates safety standards of design, manufacture, and intended uses of the product.

### **Features**

- Hundreds of shades of colors
- No electricity present in fiber optics
- Completely silent
- Long life LED technology
- Cool running
- Low voltage transformer supplied
- Durable and easy to use
- Easy Installation
- 1 Year manufacturers guarantee (collect and return)

### **Pack contents**

- 1 - Calming LED fiber Optic Jellyfish
- 1 - 6 ft. Fiber optic sideglow harness
- 1 - Calming Lightsource
- 1 - Low voltage transformer
- 2 - Wall brackets
- 4 - 8-32 x 5/8" machine screws
- 4 - 8-32 flat washers
- 4 - 8-32 lock washers
- 1 - Drywall Hardware installation

## Installation should be done by an experienced, competent installer. Requires a minimum ceiling height of 94" (239cm)

The product **MUST** be fixed to a strong, solid wall using the correct fasteners. The fasteners used are dependant on the construction of your wall. The fasteners used should have a minimum rating of 50 lbs. We have included four anchors, each with a rated strength of 100 lbs. If you are installing on a surface other than drywall, please consult with a qualified installer. **NOTE:** If your wall construction has wood wall studs, and you can align one of the brackets with a wall stud, we highly recommend that you do so. In those cases, you will need 3 lag screws in place of the provided anchors for that bracket. ***These instructions assume you will use all four of the provided anchors.***

1. Remove all the packaging and verify that you have all the correct items.
2. The white jellyfish top is hinged to the "base". Gently un-fold the top from the base until it is at 90 degrees.
3. Lock in in place by ensuring that the support bracket (shown, right) is locked in place.
4. Align a bracket to the mounting holes as shown, below.
5. Put one lock washer and one flat washers on each bolt, then thread them into the Jellyfish base (below, right).



6. Determine where you wish to mount the Jellyfish. Locate the nearest electrical outlet. The location of the outlet you plan to use will determine which side of the Jellyfish wood base that you will mount the lightsource.

*In this example, we are aligning the lightsource to the right side of the Jellyfish. If your electrical outlet is to the left of the installation location, you can reverse the location to the left side.*

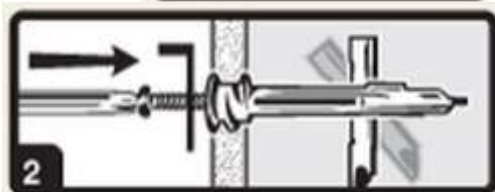


7. Place the lightsource onto the Jellyfish wood base as shown, right. (Depending on the type of Jellyfish you purchased, your lightsource may be a different size. This does not matter).

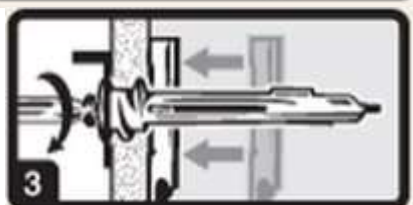


8. Peel the adhesive off of the Velcro strips (image, right) and press the lightsource firmly down onto the wooden base in this location.
9. Now, remove the lightsource, keeping one side of the Velcro in place on the board. The rest of the installation will be easier without the lightsource in place.
10. Determine the height at which you wish to install the Jellyfish. We recommend that the fiber optics be a minimum of 6" off of the floor, or optimally at 18" if your ceiling height permits. **NOTE:** The top anchor for your brackets should be a minimum of 5" below the ceiling to provide proper clearance for the Jellyfish.
11. Once you have decided where and at what height you wish to mount the Jellyfish, hold the jellyfish in place, level it, and mark the anchor locations through the brackets onto the wall (Mark the top and bottom holes in the bracket. The center hole is not used). **HINT:** Use a level to make sure the marks on the left are level with the marks on the right.
12. Set the Jellyfish aside to install the anchors.

13. Using a #2 Phillips screwdriver and **WITHOUT** the anchor's screw installed, press the anchor tip slightly into drywall (1) and, while applying pressure, turn anchor until flush with drywall (2). **Make sure the arrows on head of anchor point up and down.** Do not overtighten. Repeat on each mark.



14. Now, insert the anchor's long screw, which will flip the back side of the anchor (2) vertically. You might need to tap it. Then tighten it to pull it against the drywall (3).



15. Remove the screw and set aside.
16. With your helper, hold the Jellyfish brackets up to the Anchors, put a washer on the anchor's screw and tighten. Repeat for all four anchors.
17. Peel off the protective coating from the mirror on the bottom of the base. This is easier to do before the fiber optics are threaded.
18. Remove the fiber optics from the bag. There are approximately 150 strands of fiber optics. Each hole in the Jellyfish base should get 15 strands, but you can adjust this if you prefer to have them distributed differently. **HINT:** It is easier, and will prevent tangles, if you count out the strands next to the metal "termination" and NOT from the ends of the strands.
19. Count out 15 strands and thread them through the first hole.
20. Repeat for the remaining 9 holes. Then, make any adjustments you want. You can always change this later as well if desired.
21. Replace the lightsource onto the Velcro strips. Press down firmly.

22. Put the end of the termination into the lightsource (image, right).
23. Plug the supplied Low Voltage transformer into the back of the lightsource. **NOTE: In this instruction sheet, the images show the IRiS lightsource, which is the same size as the Superactive lightsource and larger than the calming lightsource. The calming lightsource has a small 2.1mm socket.**



24. If you have the larger lightsource and transformer, and if you plan on keeping the large transformer on the wood base, we recommend that you screw it in place. If you do this, **USE SCREWS THAT ARE 1/2" OR SHORTER**. Otherwise, you will damage the mirrored surface on the bottom of the Jellyfish.



25. Plug the transformer into the electrical socket, and ENJOY!

*Please note: Only use the transformer supplied. Use of a different transformer may result in damage to the product and void the warranty.*

## Cleaning and Maintenance

The fiber optic unit should be cleaned with a damp soft cloth. A non-abrasive cleaning agent or antibacterial solution may be used for stubborn stains. Please check the cleaning agent on an inconspicuous area of the unit to ensure it is appropriate to use. Ensure no liquid enters the lightsource.

The unit has been designed for use by people with special needs, however this does NOT mean it is impossible to damage. Take care if/when moving the Jellyfish to prevent damage to the Jellyfish or Lightsource.

Soak the fiber optic strands in the solution and clean with a cloth before rinsing and allow this to dry naturally. Do not place the termination (metal end of the optic) in the solution. ***This may need to be cleaned more frequently depending on the level of usage.***

The Fiber Optic Jellyfish should be untangled and straightened at least once a week to ensure it is at its optimum condition.

## Fiber Optic Safety

**A risk assessment must be completed for each person who is to have access to the Fiber Optics before use. Do not allow the Fiber Optics to be put in a user's mouth under any circumstances.**

**Ensure the person using the Fiber Optics is under constant supervision, and do not allow the Fiber Optics to be put around a person's neck.**

## Troubleshooting

Q. The unit doesn't work.

- A1. Is it switched on? If so,
- A2. Are the fiber optic strands connected to the lightsource? If so,
- A3. Has the unit scrolled through its colors? If not,
- A4. Please contact us for further assistance.

## Contact Details

For USA please email [support@experia-usa.com](mailto:support@experia-usa.com)

Telephone: (800) 882-4045.

**Manufactured proudly in the USA by Experia USA, Inc.**

© Copyright 2019 Experia All rights reserved. Experia is a registered trademark.



experia **USA**  
multisensory for everyone