

Contact Details

For USA please email office@experia-usa.com

For UK and rest of the world email support@experia-innovations.co.uk

Telephone: (800) 882-4045

Please note: email is our support team's preferred communication and this takes precedence over telephone calls.

QUESTIONS & IDEAS?

If you have an idea on how to improve this product or want to see your product idea realized, please email: ideas@experia-usa.com.

All ideas are presented to our OT, technical and finance department and if all procedures are passed we will contact you to discuss your idea further.

We can't promise to develop every product but if it's a great idea, we'll try!

© Copyright 2010-2013 Experia
All rights reserved.
Experia is a registered trademark.

experia **usa**
multisensory for everyone



Sensory Room Aromatherapy Bundle

060200

Product Manual

3+ years



Experia USA, Inc.
2880 McEver Road
Bldg. 1 - D
Buford, GA 30518
(800) 882-4045
info@experia-usa.com

experia
multisensory for everyone

Congratulations on the purchase of your Sensory Room Aromatherapy Bundle!

We hope that this product helps to create the optimal sensory environment for your facility and for your clients.

The Aromatherapy Diffuser is designed to cleanly, easily, and quietly disperse Aromatherapy oils throughout the air wherever you place the unit.

Please ensure you read and follow these Instructions carefully before operating the unit. Please keep this manual for future reference.

Features

- Ergonomic design
- Easy maintenance
- Durable and easy to use
- 1 Year Manufacturers Guarantee (Collect and Return)

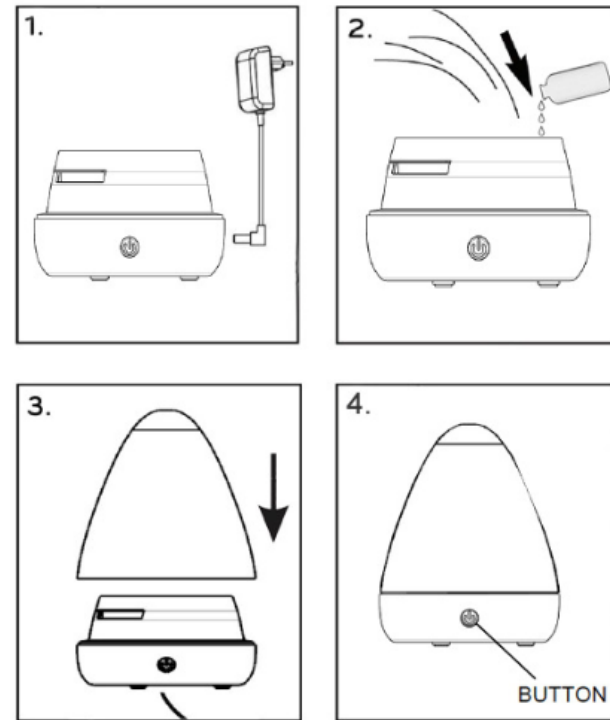
Pack contents

1 x Aromatherapy Diffuser
8 x Essential Oils

Precautions

1. Recognize that Aromatherapy oils are highly volatile pure plant extracts that may cause an allergic reaction in some people. Please be advised that sustained exposure to certain essential oils may result in toxicity. Consult a physician if you have any questions concerning the safety of a particular essential oil.
2. Keep out of reach of children. Neither the Aromatherapy Diffuser nor the essential oils are toys.
3. Do not operate the unit near open water sources such as bath tubs, into which the Diffuser could fall causing electrocution or serious injury.
4. Add oil to the Diffuser only when the unit has been turned off.
5. Do not apply essential oils directly on the skin.
6. Essential oils may stain or damage wood, upholstery, or fabrics if spilled.
7. Essential oils are flammable. Keep away from flames.
8. Not recommended for use with children under the age of 5. Consult your child's physician if you have concerns.

Getting Started



1. Plug the Adaptor into the DC Jack on the back of the diffuser base. (Fig. 1)
2. Remove the Cover from the Base. Fill the mister with tap water to the Max Fill Line (inside Base). DO NOT USE DISTILLED WATER. Do not fill to the top. Add 3-5 drops of essential oil directly into the water tank. (Fig 2)
3. Replace cover onto the top of Base. (Fig. 3)
4. Button Functions: (Fig. 4)
 - 1st Push- Continuous mist with rotating lights.
 - 2nd Push- Continuous mist with freeze color.
 - 3rd Push- Continuous mist with light off.
 - 4th Push- Turns unit off.
5. The unit will automatically shut off when the water level is too low.

Additional Notes:

- Refill with tap water as needed for unit to operate.
- It is normal for the temperature of the water and the adaptor to increase while in operation.
- Unplug unit when not in use.