

Cleaning and Maintenance

This equipment should only need occasional dusting. Handle the mirror ball gently, so as not to dislodge any mirrored pieces. In the event that you dislodge a piece of mirror, pick it up immediately as it can be a choking hazard. They can be glued back into place using standard white glue.

Troubleshooting

Pin Spot does not work: Make sure it is plugged in.

Mirror Ball does not rotate: Make sure it is turned on. Replace Battery.

Contact Details

For USA please email: office@experia-usa.com

Telephone: (800) 882-4045

Please note: email is our support team's preferred communication and this takes precedence over telephone calls.

Proudly Distributed by Experia USA

2880 McEver Road, 1 - D

Buford GA, 30518

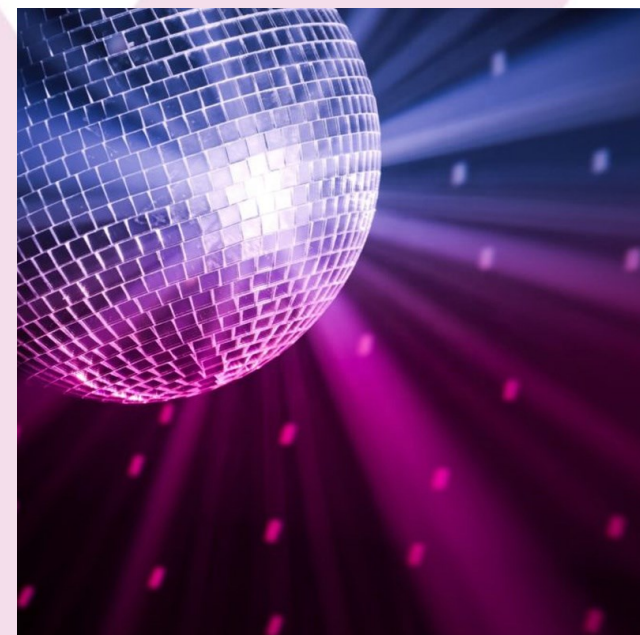
© Copyright 2021 Experia

All rights reserved.

Experia is a registered trademark.



experia **usa**
multisensory for everyone



Deluxe Mirror Ball Bundle

150005

Product Manual

Experia USA, Inc.
2880 McEver Road
Bldg. 1 - D
Buford, GA 30518
(800) 882-4045
info@experia-usa.com

experia
multisensory for everyone

Congratulations on the purchase of your mirror ball bundle! The Mirror ball bundle adds a calming, interesting element to any sensory room, and is very cost effective. Please follow all warnings on the product and within this manual. If upon receipt of this product, the user suspects that the product is defective, and/or requires service or repair due to malfunction or damage to the product, please contact the manufacturer immediately. Please be aware that improper installation and/or use or misuse of this product may result in injury, death, or adverse reactions to its user. Failure to comply with these precautions or with specific warnings elsewhere in this manual violates safety standards of design, manufacture, and intended uses of the product.

Pack contents

1 x Mirror ball

1 x Mirror ball rotator

1 x Deluxe LED
Multicolor Spotlight.



Note: The mirror ball rotator requires one D-cell battery, not included. This will allow for more flexible placement of the mirror ball, independent of power outlet availability.

Installing a Mirror ball bundle & Effects Wheel

We recommend that you use a qualified installer or handy-man for this installation.

1. Choose a location for the mirror ball. We recommend having it in a corner, or close to one wall. Though the mirror ball and motor are lightweight, we recommend using at least a 75 lb. ceiling anchor with hook to install the mirror ball motor. Consult your installer in the case of a dropped ceiling.
2. Locate the spotlight, if possible, in the opposite corner, or the opposite side of the room. This will give you the best effect from the installation.
3. Safety instructions for the pin spot are on the separate spotlight manual, packaged in with the Pin Spot. Please be familiar with all safety precautions..

4. An alternate, often preferred, installation for both the pin spot AND the mirror ball is to mount a shelf bracket (available at any home improvement store) to the wall, and suspend both the pin spot and mirror ball from the brackets (see bracket sample image, right). This keeps the heat from the pin spot away from wall surfaces, allows a greater degree adjustability, and also eliminates the need to mount to the ceiling, which in some rooms might be quite difficult. Use only heavy duty wall anchors.
5. Choose the preferred program (refer to the spotlight manual).
6. Aim the pin-spot at the mirror ball, adjust as necessary, and enjoy.



Use the Menu, Up, Down, and Enter buttons on the back of the spotlight to engage the desired output of the light.

Menu	Numerical	Description
A_____	001~512	DMX (6 channel) or slave serial
Run_	0	Turn off light.
	1	red\green\blue\white monochrome jump
	2	Red light up; green\blue\white monochromatic jump
	3	Green light up; green\blue\white monochromatic jump
	4	Blue light up; green\blue\white monochromatic jump
	5	White light up; green\blue\white monochromatic jump
	6	Red\green\blue\white gradually changes colors
	7	Red\green\blue\white rapidly changes colors
	8	Red and green gradually change; blue and white off
	9	Red and blue gradually change; green and white off
	A	Green and blue gradually change; red and white off
	B	Red\green\blue\white gradually alternate
	C	Red\green\blue\white mixed color jump
Sou_	1	Sound control 1 (DMX only)
	2	Sound control 2 (DMX only)
	3	Sound control 3 (DMX only)
colr	r000~255	Red linear adjustment (from dark to bright)
	g000~255	Green linear adjustment (from dark to bright)
	b000~255	Blue linear adjustment (from dark to bright)
	y000~255	White linear adjustment (from dark to bright)
	LEon	Ditigal tube light up (DMX Only)
	Loff	Digital tube will close without key action in 3s (DMX Only)